



www.Source1Parts.com

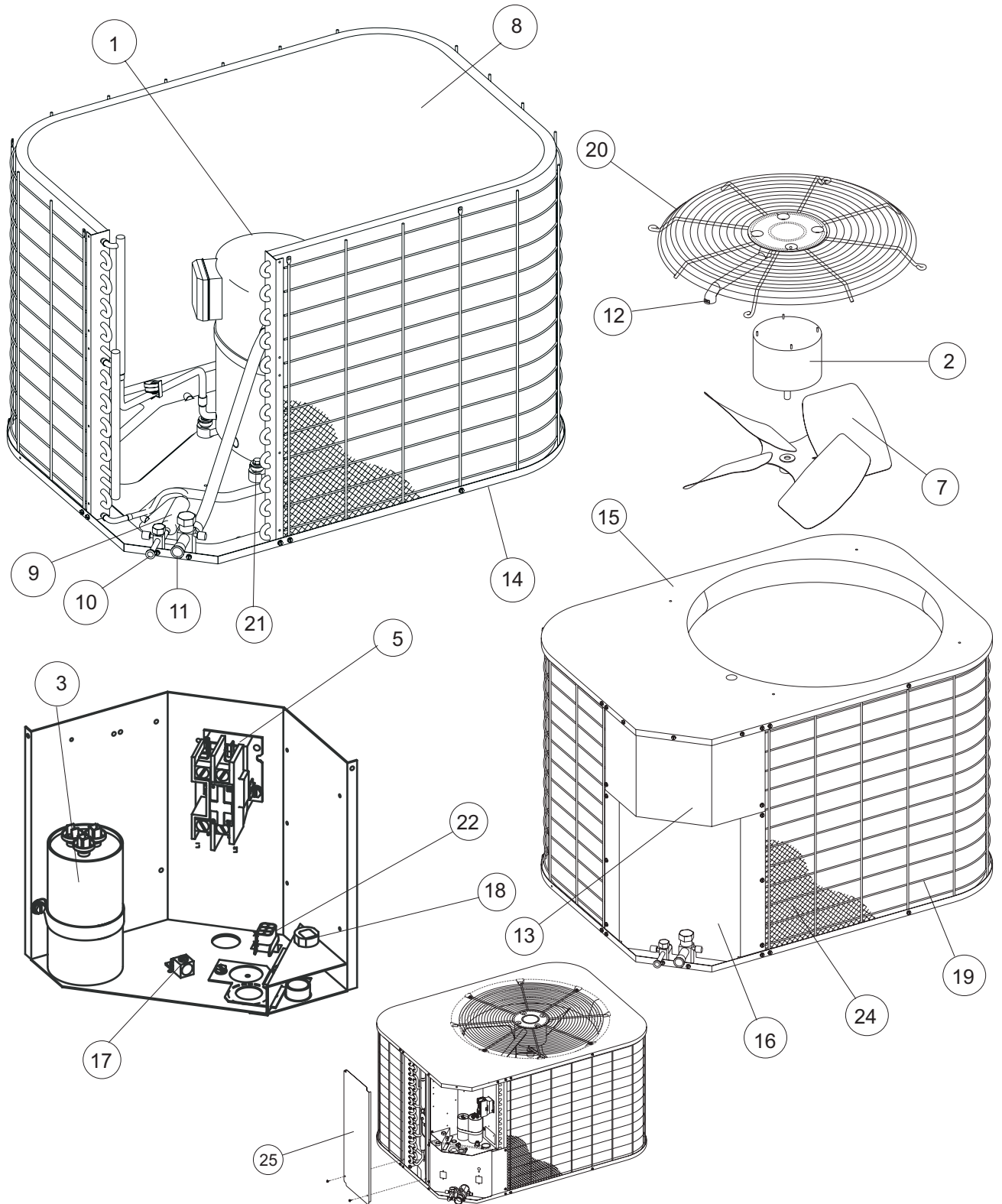
HVAC SERVICE PARTS

FRCS SERIES, 14 SEER X3 R-22 AIR CONDITIONER (STYLE A, B&C)

Supersedes:035-21169-001 Rev. D (0407)

035-21169-001 Rev. E (0408)

1 of 4



ITEM	DESCRIPTION	FRCS0181BAA FRCS0181BAB	FRCS0181BAC	FRCS0241BFA	FRCS0241BHA	FRCS0301BFA	<
1	Compressor, Hermetic	S1-01503848001	S1-01504085001	S1-01503835001	S1-01503985001	S1-01503822001	<
1A*	Compressor Plug Harness	S1-02531884000	S1-02531884000	S1-02531884000	S1-02531884000	S1-02531884000	
2	Motor, Direct Drive Fan	S1-02426029000	S1-02426029000	S1-02426029000	S1-02426029000	S1-02435328000	
3	Capacitor, Run (35/5) [RC]	S1-02423998700	S1-02423998700	S1-02423998700	S1-02423998700	---	
	Capacitor, Run (30/5) [RC]	---	---	---	---	S1-02424778000	
4							
5	Contact, Electrical (30 Amp) [M]	S1-02427531000	S1-02427531000	S1-02427531000	S1-02427531000	S1-02427531000	
6							
7	Blade, Fan (22")	S1-02634097000	S1-02634097000	S1-02639474000	S1-02634097000	S1-02639474000	
8	Coil, Outdoor	S1-37323816003	S1-37323816003	S1-37323857001	S1-37323816003	S1-37323857003	
9	Drier, Filter	S1-02922156000	S1-02922156000	S1-02922156000	S1-02922156000	S1-02922156000	
10	Valve, Liquid (3/8")	S1-02531899000	S1-02531899000	S1-02531899000	S1-02531899000	S1-02531899000	
11	Valve, Suction (3/4")	S1-02531900000	S1-02531900000	S1-02531900000	S1-02531900000	---	
12	Wireway	S1-02813216001	S1-02813216001	S1-02813216001	S1-02813216001	S1-02813216001	
13	Cover, Electrical Box	S1-07320018001	S1-07320018001	S1-07320018001	S1-07320018001	S1-07320018001	
14	Pan, Base	S1-07320048001	S1-07320048001	S1-07320004801	S1-07320004801	S1-07320004801	
15	Panel, Top	S1-07320042801	S1-07320042801	S1-07320042801	S1-07320042801	S1-07320042801	
16	Plate, Blockoff	S1-07320002801	S1-07320002801	S1-07323791002	S1-07320002801	S1-07320002804	
17	Lug, Ground	S1-02521798000	S1-02521798000	S1-02521798000	S1-02521798000	S1-02521798000	
18	Relief, Strain	S1-02509687000	S1-02509687000	S1-02509687000	S1-02509687000	S1-02509687000	
19	Guard, Coil (Style A)	S1-37323835002	S1-37323835002	S1-37323817004	S1-37323835002	S1-37323847001	
	Guard, Coil (Style B)	S1-37323859023	S1-37323859023	---	---	---	
20	Guard, Fan	S1-02635511822	S1-02635511822	S1-02635511822	S1-02635511822	S1-02635511822	
21	Mount, Cushion (4 Req'd)	S1-9435-1081	S1-9435-1081	S1-9435-1081	S1-02809519000	S1-9435-1081	
22	Plug, Electrical	S1-02533306006	S1-02533306006	S1-02533306006	---	S1-02533306006	
23*	Diagram, Wiring	18673	18673	18673	18673	18673	
24	Coil Guard, Plastic Mesh	S1-02814728000	S1-02814728000	S1-02815240000	S1-02814728000	S1-02814733000	
25	Panel, Filler	---	---	---	---	---	
26*	Harness, Wiring	S1-37320055004	S1-37320055004	S1-37320055004	S1-37320055004	S1-37320055004	
27*	Kit, Acorn Nut	S1-36390117700	S1-36390117700	S1-36390117700	S1-36390117700	S1-36390117700	
28*	Check Valve w/Muffler	S1-02209277000	---	S1-02209277000	S1-02209277000	S1-02209277000	
	Check Valve	---	S1-02211518000	---	---	---	<
29*	Bezel/Logo	S1-37323701001	S1-37323701001	S1-37323701001	S1-37323701001	S1-37323701001	

NOTE: *Not Shown
 New replacement parts shown in **bold** face type at the first printing of parts list dated 4/08.
 Major components and suggested stocking items are shown with shaded item number.
 "<" Across from row indicates a change in that row.
 --- Not applicable to specified model.



ITEM	DESCRIPTION	FRCS0601BGA FRCS0601BGB
1	Compressor, Hermetic	S1-01503842004
1A*	Compressor Plug Harness	S1-02531884000
2	Motor, Direct Drive Fan	S1-02427596700
3	Capacitor, Run (70/5) [RC]	S1-02427616000
4		
5	Contactora, Electrical (30 Amp) [M]	S1-02427531000
6		
7	Blade, Fan (24")	S1-02642434000
8	Coil, Outdoor	S1-37323857002
9	Drier, Filter	S1-52634088000
10	Valve, Liquid (3/8")	S1-02531899000
11	Valve, Suction (7/8")	S1-02531910000
12	Wireway	S1-02813297000
13	Cover, Electrical Box	S1-07320018001
14	Pan, Base	S1-07319001500
15	Panel, Top	S1-07323757001
16	Plate, Blockoff	S1-07320002804
17	Lug, Ground	S1-02521798000
18	Relief, Strain	S1-02509687000
19	Guard, Coil (Style A)	S1-37323760002
	Guard, Coil (Style B)	S1-37323859003
20	Guard, Fan	S1-02635511824
21	Mount, Cushion (4 Req'd)	S1-02812355000
22	Plug, Electrical	S1-02533306006
23*	Diagram, Wiring	18673
24	Coil Guard, Plastic Mesh	S1-02814728000
25	Panel, Filler	S1-07323758002
26*	Harness, Wiring	S1-37320055004
27*	Kit, Acorn Nut	S1-36390117700
28*	Check Valve w/Muffler	S1-02209277000
29*	Bezel/Logo	S1-37323701001

NOTE: *Not Shown
New replacement parts shown in **bold** face type at the first printing of parts list dated 4/08.
Major components and suggested stocking items are shown with shaded item number.
"←" Across from row indicates a change in that row.
--- Not applicable to specified model.



NOTES

TO ORDER AUTHORIZED FACTORY REPLACEMENT PARTS - Contact your Source1 HVAC Parts Distributor or visit our website at **www.Source1Parts.com** for a Distributor and Dealer listing.