



www.Source1Parts.com

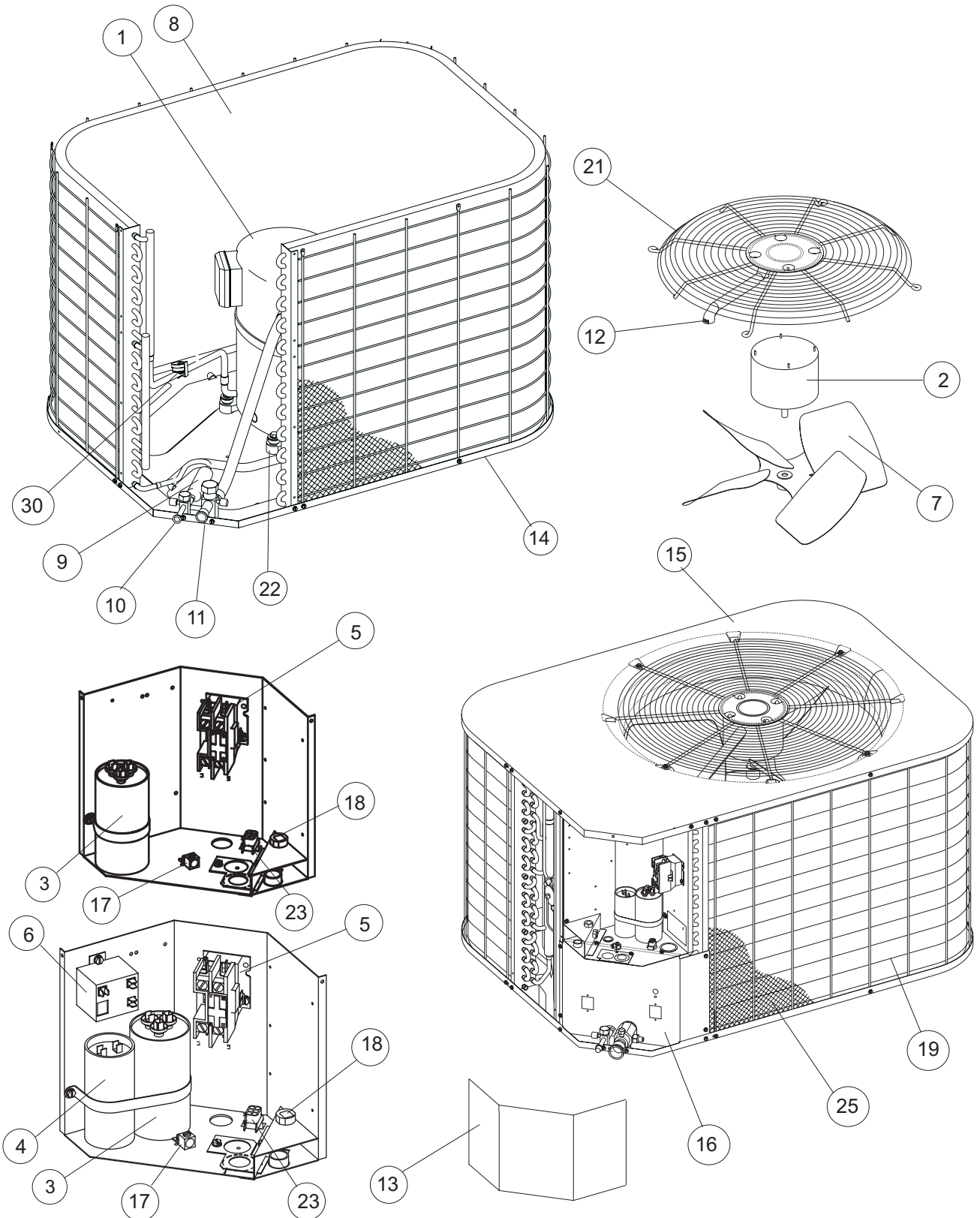
CCBD SERIES, 13 SEER X3 AIR CONDITIONER (R-410A, STYLE A)

HVAC SERVICE PARTS

Supersedes:035-21209-001 Rev. E (0707)

035-21209-001 Rev. F (0208)

1 of 4



ITEM	DESCRIPTION	CCBD018FS1A	CCBD024FS1A	CCBD030FS1A	CCBD036FS1A
1	Compressor, Hermetic	S1-01503895001	S1-01503249001	S1-01503896001	S1-01503897001
1A*	Compressor Plug Harness	S1-02531884000	S1-02531884000	S1-02531884000	S1-02531884000
2	Motor, Direct Drive Fan	S1-02426029000	S1-02426029000	S1-02435328000	S1-02435328000
3	Capacitor, Run (30/5) [RC]	S1-02424778000	S1-02424778000	---	---
	Capacitor, Run (35/5) [RC]	---	---	S1-02423998000	S1-02425859000
4	Capacitor, Start	S1-02425390000	S1-02425390000	---	S1-02425390000
5	Contact, Electrical (30 Amp) [M]	S1-02427531000	S1-02427531000	S1-02427531000	S1-02427531000
6	Relay, Start	S1-02435609000	S1-02435610000	---	S1-02435611000
7	Blade, Fan (22")	S1-02634097000	S1-02634097000	S1-02634097000	S1-02634097000
8	Coil, Condenser	S1-37319800004	S1-37319800004	S1-37319800004	S1-37323860002
9	Drier, Filter	S1-02922195000	S1-02922195000	S1-02922195000	S1-02922195000
10	Valve, Liquid (3/8")	S1-02531899000	S1-02531899000	S1-02531899000	S1-02531899000
11	Valve, Suction (3/4")	S1-02531900000	S1-02531900000	S1-02531900000	S1-02531900000
12	Wireway	S1-02813216001	S1-02813216001	S1-02813216001	S1-02813216001
13	Cover, Electrical Box	S1-07320018001	S1-07320018001	S1-07320018001	S1-07320018001
14	Pan, Base	S1-07320004801	S1-07320004801	S1-07320004801	S1-07320004801
15	Panel, Top	S1-07320042801	S1-07320042801	S1-07320042801	S1-07320042801
16	Plate, Blockoff	S1-07320002801	S1-07320002801	S1-07323791002	S1-07323791002
17	Lug, Ground	S1-02521798000	S1-02521798000	S1-02521798000	S1-02521798000
18	Relief, Strain	S1-02509687000	S1-02509687000	S1-02509687000	S1-02509687000
19	Guard, Coil (1 Pair)	S1-37323835002	S1-37323835002	S1-37323835002	S1-37323854001
20					
21	Guard, Fan	S1-02635511122	S1-02635511122	S1-02635511122	S1-02635511122
22	Mount, Cushion (4 Req'd)	S1-9435-1081	S1-9435-1081	S1-9435-1081	S1-9435-1081
23	Connector, 6 Pos Cap	S1-02533306006	S1-02533306006	S1-02533306006	S1-02533306006
24*	Diagram, Wiring	035-15861-501	035-15861-501	035-15861-501	035-15861-501
25	Coil Guard, Plastic Mesh	S1-02814728000	S1-02814728000	S1-02814728000	S1-02815240000
26	Check Valve w/Muffler	---	---	S1-02209077000	---
27*	Harness, Wiring	S1-37320055004	S1-37320055004	S1-37320055004	S1-37320055004
28*	Kit, Motor Mounting (Acorn Nuts)	S1-36390117700	S1-36390117700	S1-36390117700	S1-36390117700
29*	Bezel/Logo	S1-37323701001	S1-37323701001	S1-37323701001	S1-37323701001

<

NOTE: *Not Shown
 New replacement parts shown in **bold** face type at the first printing of parts list dated 2/08.
 Major components and suggested stocking items are shown with shaded item number.
 "<" Across from row indicates a change in that row.
 --- Not applicable to specified model.



ITEM	DESCRIPTION	CCBD042FS1A	CCBD048FS1A	CCBD060FS1A
1	Compressor, Hermetic	S1-01503894004	S1-01503593004	S1-01503891004
1A*	Compressor Plug Harness	S1-02541088000	S1-02531884000	S1-02531884000
2	Motor, Direct Drive Fan	S1-02427596000	S1-02427596000	S1-02427596000
3	Capacitor, Run (45/5) [RC]	S1-02425895000	---	---
	Capacitor, Run (60/5) [RC]	---	S1-02425033000	---
	Capacitor, Run (70/5) [RC]	---	---	S1-02427616000
4	Capacitor, Start	---	---	---
5	Contact, Electrical (30 Amp) [M]	S1-02427531000	S1-02427531000	S1-02427531000
6	Relay, Start	---	---	---
7	Blade, Fan (22")	S1-02634094000	S1-02634094000	S1-02634094000
8	Coil, Condenser	S1-37323860002	S1-37323860002	S1-37323782002
9	Drier, Filter	S1-02922195000	S1-02922195000	S1-02922195000
10	Valve, Liquid (3/8")	S1-02531899000	S1-02531899000	S1-02531899000
11	Valve, Suction (7/8")	S1-02531901000	S1-02531901000	S1-02531901000
12	Wireway	S1-02813216001	S1-02813216001	S1-02813216001
13	Cover, Electrical Box	S1-07320018001	S1-07320018001	S1-07320018001
14	Pan, Base	S1-07320004801	S1-07320004801	S1-07319001500
15	Panel, Top	S1-07320042801	S1-07320042801	S1-07323757001
16	Plate, Blockoff	S1-07323791002	S1-07323791002	S1-07320002804
17	Lug, Ground	S1-02521798000	S1-02521798000	S1-02521798000
18	Relief, Strain	S1-02509687000	S1-02509687000	S1-02509687000
19	Guard, Coil (1 Pair)	S1-37323854001	S1-37323854001	S1-37323859020
20				
21	Guard, Fan	S1-02635511122	S1-02635511122	S1-02635511124
22	Mount, Cushion (4 Req'd)	S1-02810581000	S1-02810581000	S1-02810581000
23	Connector, 6 Pos Cap	S1-02533306006	S1-02533306006	S1-02533306006
24*	Diagram, Wiring	276707	035-15861-501	035-15861-501
25	Coil Guard, Plastic Mesh	S1-02815240000	S1-02815240000	S1-02814733000
26	Check Valve w/Muffler	---	---	---
27*	Harness, Wiring	S1-37320055004	S1-37320055004	S1-37320055004
28*	Kit, Motor Mounting (Acorn Nuts)	S1-36390117700	S1-36390117700	S1-36390117700
29*	Bezel/Logo	S1-37323701001	S1-37323701001	S1-37323701001

NOTE: *Not ShownNew replacement parts shown in **bold** face type at the first printing of parts list dated 2/08

Major components and suggested stocking items are shown with shaded item number.

"←" Across from row indicates a change in that row.

--- Not applicable to specified model.

NOTES

TO ORDER AUTHORIZED FACTORY REPLACEMENT PARTS - Contact your Source1 HVAC Parts Distributor or visit our website at www.Source1Parts.com for a Distributor and Dealer listing.