



www.Source1Parts.com

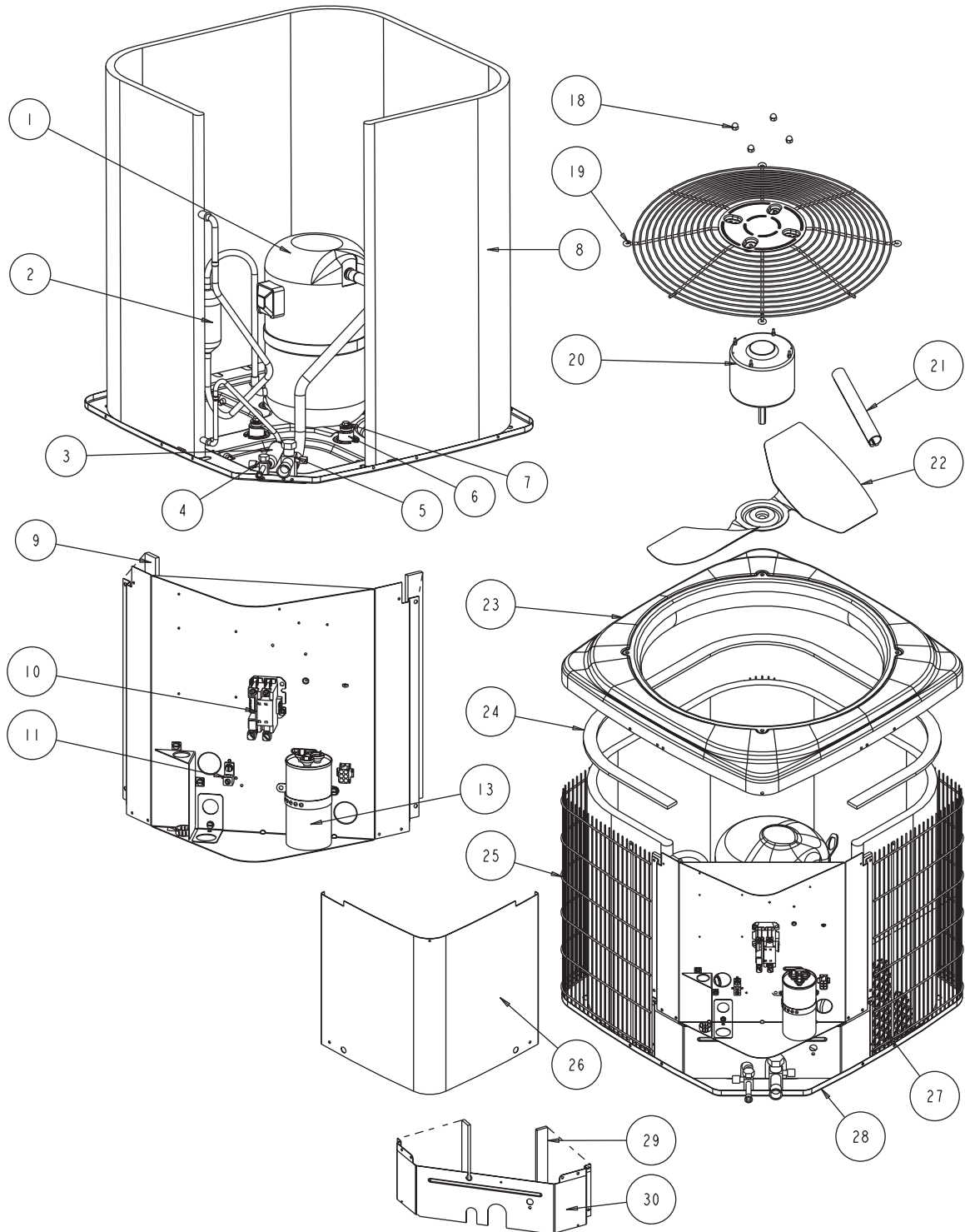
GCGD SERIES - MICROCHANNEL 13 SEER 3PH AIR CONDITIONER - R-410A (STYLE A)

HVAC SERVICE PARTS

Supersedes:Nothing

035-22745-001 Rev. A (0709)

1 of 4



230 VOLT						
ITEM	DESCRIPTION	GCGD30S43S3A	GCGD36S43S3A	GCGD42S43S3A	GCGD48S43S3A	GCGD60S43S3A
1	Compressor	S1-01504179004	S1-01504180001	S1-01504181001	S1-01504182001	S1-01503676004
2	Muffler	---	---	S1-02539847000	S1-02539847000	---
3	Filter Drier	S1-02922195000	S1-02922195000	S1-02922195000	S1-02922195000	S1-02922195000
4	Base Valve (3/8") (Liquid)	S1-02531899000	S1-02531899000	S1-02531899000	S1-02531899000	S1-02531899000
5	Base Valve (3/4") (Suction)	S1-02531900000	S1-02531900000	---	---	---
	Base Valve (7/8") (Suction)	---	---	S1-02531901000	S1-02531901000	S1-02531901000
6	Compressor Mount (Pkg. of 4)	S1-02809519000	S1-02809519000	S1-02809519000	S1-02809519000	S1-02812355000
7	Compressor Bolt (4 Req'd)	S1-1048-0033	S1-1048-0033	S1-1048-0033	S1-1048-0033	S1-1048-0033
8	Outdoor Coil Assembly	S1-37327820001	S1-37327820002	S1-37327820003	S1-37327820003	S1-37327851001
9	Foam Strips, Control Box (2 Req'd)	S1-02815490000	S1-02815490000	S1-02815490000	S1-02815490000	S1-02815490000
10	Contacto (30 amp)	S1-02425842700	S1-02425842700	S1-02425842700	S1-02425842700	S1-02425842700
11	Lug, Ground	S1-02521798000	S1-02521798000	S1-02521798000	S1-02521798000	S1-02521798000
12*	Bushing, Snap	S1-02522638000	S1-02522638000	S1-02522638000	S1-02522638000	S1-02522638000
13	Run Capacitor (5MFD)	S1-02420043700	S1-02420043700	S1-02420043700	S1-02420043700	S1-02420043700
14*	Switch, Pressure	S1-02535359000	S1-02535359000	S1-02535359000	S1-02535359000	S1-02535359000
15	Harness, Main Wiring	S1-37320055004	S1-37320055004	S1-37320055004	S1-37320055004	S1-37320055004
16	Rubber Mount, Outdoor Coil (6 Req'd)	S1-02815500000	S1-02815500000	S1-02815500000	S1-02815500000	S1-02815500000
17	Harness, Compressor	S1-02541385000	S1-02541385000	S1-02541385000	S1-02541385000	S1-02541385000
18	Kit, Motor Mounting (Acorn Nuts)	S1-36390117700	S1-36390117700	S1-36390117700	S1-36390117700	S1-36390117700
19	Guard, Fan	S1-02642483000	S1-02642487000	S1-02642487000	S1-02642487000	S1-02642586000
20	Motor, Fan	S1-02426020700	S1-02427596700	S1-02427596700	S1-02427596700	S1-02427596700
21	Wireway	S1-02815486000	S1-02815486000	S1-02815486000	S1-02815486000	S1-02815864000
22	Blade, Fan	S1-02642444000	S1-02634094000	S1-02642491000	S1-02642491000	S1-02631361000
23	Top	S1-07323893001	S1-07323893002	S1-07323893002	S1-07323893002	S1-07327844001
24	Molded Foam (Outdoor Coil)	S1-02815508000	S1-02815509000	S1-02815509000	S1-02815509000	S1-02815863000
25	Guard, Coil	S1-07327903004	S1-07327903005	S1-07327903006	S1-07327903006	S1-07327903001
26	Cover, Control Box	S1-07323895001	S1-07323895001	S1-07323895001	S1-07323895001	S1-07323895001
27	Coil Guard, Plastic Mesh	S1-02642492000	S1-02642547000	S1-02642546000	S1-02642546000	S1-02815868000
28	Pan, Base	S1-07323894001	S1-07323894002	S1-07323894002	S1-07323894002	S1-07327844002
29	Foam Strips, Blockoff (2 Req'd)	S1-02815493000	S1-02815493000	S1-02815494000	S1-02815494000	S1-02815522000
30	Panel, Blockoff	S1-07323898002	S1-07323898002	S1-07323898003	S1-07323898003	S1-07327832003
31*	Orifice (.061)	S1-02919387003	---	---	---	---
	Orifice (.065)	---	S1-02919387011	---	---	---
	Orifice (.075)	---	---	S1-02919387017	---	---
	Orifice (.073)	---	---	---	S1-02919387005	---
	Orifice (.087)	---	---	---	---	S1-02919387007
32*	Bezel Plate	S1-02815487000	S1-02815487000	S1-02815487000	S1-02815487000	S1-02815487000
33*	Fastener, Push-In (6 Req'd)	S1-02118381000	S1-02118381000	S1-02118381000	S1-02118381000	S1-02118381000
34*	Wiring Diagram	167242	167242	167242	167242	167242

<

NOTE: *Not Shown
 New replacement parts shown in **bold** face type at the first printing of parts list dated 7/09.
 Major components and suggested stocking items are shown with shaded item number.
 "<" Across from row indicates a change in that row.
 --- Not applicable to specified model.

440 VOLT						
ITEM	DESCRIPTION	GCGD30S44S3A	GCGD36S44S3A	GCGD42S44S3A	GCGD48S44S3A	GCGD60S44S3A <
1	Compressor	S1-01504183004	S1-01504184001	S1-01504185001	S1-01504186001	S1-01503677004
2	Muffler	---	---	S1-02539847000	S1-02539847000	---
3	Filter Drier	S1-02922195000	S1-02922195000	S1-02922195000	S1-02922195000	S1-02922195000
4	Base Valve (3/8") (Liquid)	S1-02531899000	S1-02531899000	S1-02531899000	S1-02531899000	S1-02531899000
5	Base Valve (3/4") (Suction)	S1-02531900000	S1-02531900000	---	---	---
	Base Valve (7/8") (Suction)	---	---	S1-02531901000	S1-02531901000	S1-02531901000
6	Compressor Mount (Pkg. of 4)	S1-02809519000	S1-02809519000	S1-02809519000	S1-02809519000	S1-02812355000
7	Compressor Bolt (4 Req'd)	S1-1048-0033	S1-1048-0033	S1-1048-0033	S1-1048-0033	S1-1048-0033
8	Outdoor Coil Assembly	S1-37327820001	S1-37327820002	S1-37327820003	S1-37327820003	S1-37327851001
9	Foam Strips, Control Box (2 Req'd)	S1-02815490000	S1-02815490000	S1-02815490000	S1-02815490000	S1-02815490000
10	Contactora (30 amp)	S1-02425842700	S1-02425842700	S1-02425842700	S1-02425842700	S1-02425842700
11	Lug, Ground	S1-02521798000	S1-02521798000	S1-02521798000	S1-02521798000	S1-02521798000
12*	Bushing, Snap	S1-02522638000	S1-02522638000	S1-02522638000	S1-02522638000	S1-02522638000
13	Run Capacitor (5MFD)	S1-02420043700	S1-02420043700	S1-02420043700	S1-02420043700	S1-02420043700
14*	Switch, Pressure	S1-02535359000	S1-02535359000	S1-02535359000	S1-02535359000	S1-02535359000
15	Harness, Main Wiring	S1-37320055004	S1-37320055004	S1-37320055004	S1-37320055004	S1-37320055004
16	Rubber Mount, Outdoor Coil (6 Req'd)	S1-02815500000	S1-02815500000	S1-02815500000	S1-02815500000	S1-02815500000
17	Harness, Compressor	S1-02541385000	S1-02541385000	S1-02541385000	S1-02541385000	S1-02541385000
18	Kit, Motor Mounting (Acorn Nuts)	S1-36390117700	S1-36390117700	S1-36390117700	S1-36390117700	S1-36390117700
19	Guard, Fan	S1-02642483000	S1-02642487000	S1-02642487000	S1-02642487000	S1-02642586000
20	Motor, Fan	S1-02427532000	S1-02427534000	S1-02427534000	S1-02427534000	S1-02427534000
21	Wireway	S1-02815486000	S1-02815486000	S1-02815486000	S1-02815486000	S1-02815864000
22	Blade, Fan	S1-02642444000	S1-02634094000	S1-02642491000	S1-02642491000	S1-02631361000
23	Top	S1-07323893001	S1-07323893002	S1-07323893002	S1-07323893002	S1-07327844001
24	Molded Foam (Outdoor Coil)	S1-02815508000	S1-02815509000	S1-02815509000	S1-02815509000	S1-02815863000
25	Guard, Coil	S1-07327903004	S1-07327903005	S1-07327903006	S1-07327903006	S1-07327903001
26	Cover, Control Box	S1-07323895001	S1-07323895001	S1-07323895001	S1-07323895001	S1-07323895001
27	Coil Guard, Plastic Mesh	S1-02642492000	S1-02642547000	S1-02642546000	S1-02642546000	S1-02815868000
28	Pan, Base	S1-07323894001	S1-07323894002	S1-07323894002	S1-07323894002	S1-07327844002
29	Foam Strips, Blockoff (2 Req'd)	S1-02815493000	S1-02815493000	S1-02815494000	S1-02815494000	S1-02815522000
30	Panel, Blockoff	S1-07323898002	S1-07323898002	S1-07323898003	S1-07323898003	S1-07327832003
31*	Orifice (.061)	S1-02919387003	---	---	---	---
	Orifice (.065)	---	S1-02919387011	---	---	---
	Orifice (.075)	---	---	S1-02919387017	---	---
	Orifice (.073)	---	---	---	S1-02919387005	---
	Orifice (.087)	---	---	---	---	S1-02919387007
32*	Bezel Plate	S1-02815487000	S1-02815487000	S1-02815487000	S1-02815487000	S1-02815487000
33*	Fastener, Push-In (6 Req'd)	S1-02118381000	S1-02118381000	S1-02118381000	S1-02118381000	S1-02118381000
34*	Wiring Diagram	167242	167242	167242	167242	167242

NOTE: *Not ShownNew replacement parts shown in **bold** face type at the first printing of parts list dated 7/09.

Major components and suggested stocking items are shown with shaded item number.

"←" Across from row indicates a change in that row.

--- Not applicable to specified model.

TO ORDER AUTHORIZED FACTORY REPLACEMENT PARTS - Contact your Source1 HVAC Parts Distributor or visit our website at www.Source1Parts.com for a Distributor and Dealer listing.