



www.Source1Parts.com

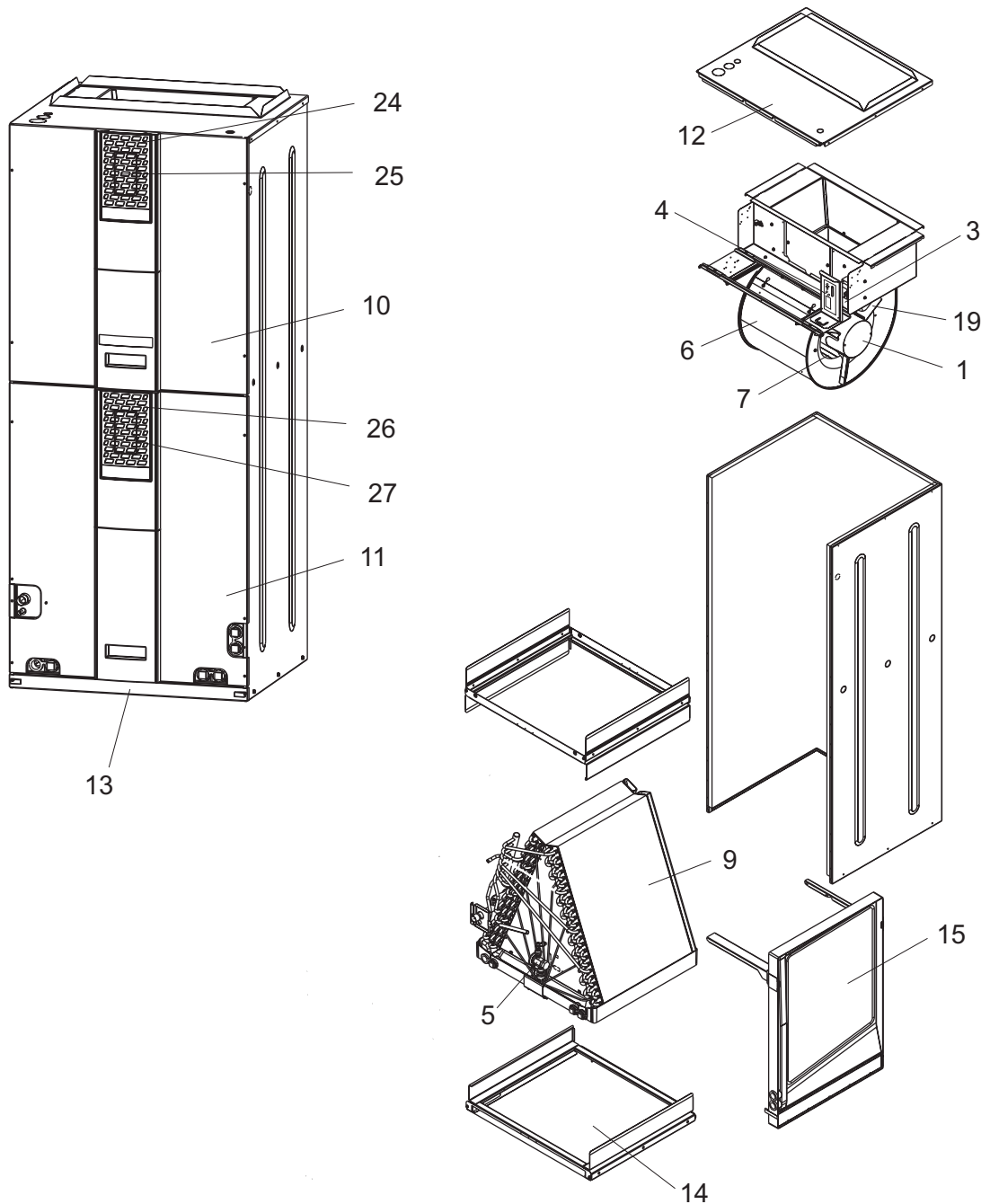
HVAC SERVICE PARTS

# AVC SERIES SINGLE PIECE ECM AIR HANDLERS WITH COMMUNICATING CONTROLS R-410A TXV AND FLEX COIL MODELS (STYLE A)

Supersedes: Nothing

035-22790-001 Rev. A (1009)

1 of 4



**FIGURE 1: SINGLE PIECE ECM AIR HANDLER W/COMMUNICATING CONTROLS-TXV AND FLEX COILS**

ITEM	DESCRIPTION	AVC24B3XH21CA	AVC24B4FH21CA	AVC24B4KH21CA	AVC36C3XH21CA
1	Motor/Module, ECM Blower (Prog.)	S1-02435826000	S1-02435826000	S1-02435826000	S1-02435827000
1A	Motor, ECM (Less Module)	S1-02435313000	S1-02435313000	S1-02435313000	S1-02431940000
1B	Module, ECM (Programmed)	S1-32435314116	S1-32435314116	S1-32435314116	S1-32432013117
2*	Plug, ID	<b>S1-02543275000</b>	<b>S1-02543275000</b>	<b>S1-02543275000</b>	<b>S1-02543276000</b>
3	Transformer (40VA)	S1-02518452700	S1-02518452700	S1-02518452700	S1-02518452700
4	Control, Fan/Elec Heat	<b>S1-33102968000</b>	<b>S1-33102968000</b>	<b>S1-33102968000</b>	<b>S1-33102968000</b>
5	TXV	---	S1-1TVM4F1	S1-1TVM4K1	---
6	Housing, Blower (w/Wheel)	S1-02642414000	S1-02642414000	S1-02642414000	S1-02642414000
7	Wheel, Blower	S1-02642281000	S1-02642281000	S1-02642281000	S1-02642199000
8					
9	Complete Coil w/Drain Pan (See Note 1)	S1-37323793011	S1-37323793011	S1-37323793011	S1-37323793002
10	Panel, Top Door (Insul)	S1-37323833001	S1-37323833001	S1-37323833001	S1-37323833002
11	Panel, Access Door (Bottom) (Insul)	S1-37323833011	S1-37323833011	S1-37323833011	S1-37323833012
12	Panel, Top (Insul)	S1-37323831023	S1-37323831023	S1-37323831023	S1-37323831013
13	Door, Bottom Door (Filter) (Insul)	S1-37323831022	S1-37323831022	S1-37323831022	S1-37323831012
14	Pan, Drain (Insul)	S1-37323794005	S1-37323794005	S1-37323794005	S1-37323794002
15	Pan, Horizontal Drain	S1-03200215000	S1-03200215000	S1-03200215000	S1-03200216000
16*	Cover, Hairpin	S1-03100206000	S1-03100206000	S1-03100206000	S1-03100210000
17*	Grommet, 3/8"	S1-02813209000	S1-02813209000	S1-02813209000	S1-02813209000
18*	Grommet, 3/4"	S1-02813204000	S1-02813204000	S1-02813204000	---
	Grommet, 7/8"	---	---	---	S1-02813205000
19	Mount, Motor	S1-37319831002	S1-37319831002	S1-37319831002	S1-37319831002
20*	Grommet, Motor Mount (3 Req'd)	S1-02814740000	S1-02814740000	S1-02814740000	S1-02814740000
21*	Ferrule, Motor Mount (3 Req'd)	S1-02320541000	S1-02320541000	S1-02320541000	S1-02320541000
22	Diagram, Wiring	546537	546537	546537	546537
23*	Harness, ECM Motor (Comm)	<b>S1-02543283000</b>	<b>S1-02543283000</b>	<b>S1-02543283000</b>	<b>S1-02543283000</b>
24	Grille, Door Blk w/Logo (Top)	S1-02642290000	S1-02642290000	S1-02642290000	S1-02642290000
25	Insert, Door Grill Blk (Top)	S1-02642292000	S1-02642292000	S1-02642292000	S1-02642292000
26	Grille, Door Gray (Btm)	S1-02642289000	S1-02642289000	S1-02642289000	S1-02642289000
27	Insert, Door Grill Gray (Btm)	S1-02642291000	S1-02642291000	S1-02642291000	S1-02642291000
28*	Baffle Kit, Condensate	S1-37323890002	S1-37323890002	S1-37323890002	S1-37323890003
29*	Clip, Baffle	S1-02131402000	S1-02131402000	S1-02131402000	S1-02131402000
30*	Line, Liquid	S1-02321572000	S1-02321572000	S1-02321572000	S1-02321573000

ITEM	DESCRIPTION	AVC36C4FH21CA	AVC36C4GH21CA	AVC36C4HH21CA	AVC36C4KH21CA
1	Motor/Module, ECM Blower (Prog.)	S1-02435827000	S1-02435827000	S1-02435827000	S1-02435827000
1A	Motor, ECM (Less Module)	S1-02431940000	S1-02431940000	S1-02431940000	S1-02431940000
1B	Module, ECM (Programmed)	S1-32432013117	S1-32432013117	S1-32432013117	S1-32432013117
2*	Plug, ID	<b>S1-02543276000</b>	<b>S1-02543276000</b>	<b>S1-02543276000</b>	<b>S1-02543276000</b>
3	Transformer (40VA)	S1-02518452700	S1-02518452700	S1-02518452700	S1-02518452700
4	Control, Fan/Elec Heat	<b>S1-33102968000</b>	<b>S1-33102968000</b>	<b>S1-33102968000</b>	<b>S1-33102968000</b>
5	TXV	S1-1TVM4F1	S1-1TVM4G1	S1-1TVM4H1	S1-1TVM4K1
6	Housing, Blower (w/Wheel)	S1-02642414000	S1-02642414000	S1-02642414000	S1-02642414000
7	Wheel, Blower	S1-02642199000	S1-02642199000	S1-02642199000	S1-02642199000
8					
9	Complete Coil w/Drain Pan (See Note 1)	S1-37323793002	S1-37323793002	S1-37323793002	S1-37323793002
10	Panel, Top Door (Insul)	S1-37323833002	S1-37323833002	S1-37323833002	S1-37323833002
11	Panel, Access Door (Bottom) (Insul)	S1-37323833012	S1-37323833012	S1-37323833012	S1-37323833012
12	Panel, Top (Insul)	S1-37323831013	S1-37323831013	S1-37323831013	S1-37323831013
13	Door, Bottom Door (Filter) (Insul)	S1-37323831012	S1-37323831012	S1-37323831012	S1-37323831012
14	Pan, Drain (Insul)	S1-37323794002	S1-37323794002	S1-37323794002	S1-37323794002
15	Pan, Horizontal Drain	S1-03200216000	S1-03200216000	S1-03200216000	S1-03200216000
16*	Cover, Hairpin	S1-03100210000	S1-03100210000	S1-03100210000	S1-03100210000
17*	Grommet, 3/8"	S1-02813209000	S1-02813209000	S1-02813209000	S1-02813209000
18*	Grommet, 7/8"	S1-02813205000	S1-02813205000	S1-02813205000	S1-02813205000
19	Mount, Motor	S1-37319831002	S1-37319831002	S1-37319831002	S1-37319831002
20*	Grommet, Motor Mount (3 Req'd)	S1-02814740000	S1-02814740000	S1-02814740000	S1-02814740000
21*	Ferrule, Motor Mount (3 Req'd)	S1-02320541000	S1-02320541000	S1-02320541000	S1-02320541000
22	Diagram, Wiring	546537	546537	546537	546537
23*	Harness, ECM Motor (Comm)	<b>S1-02543283000</b>	<b>S1-02543283000</b>	<b>S1-02543283000</b>	<b>S1-02543283000</b>
24	Grille, Door Blk w/Logo (Top)	S1-02642290000	S1-02642290000	S1-02642290000	S1-02642290000
25	Insert, Door Grill Blk (Top)	S1-02642292000	S1-02642292000	S1-02642292000	S1-02642292000
26	Grille, Door Gray (Btm)	S1-02642289000	S1-02642289000	S1-02642289000	S1-02642289000
27	Insert, Door Grill Gray (Btm)	S1-02642291000	S1-02642291000	S1-02642291000	S1-02642291000
28*	Baffle Kit, Condensate	S1-37323890003	S1-37323890003	S1-37323890003	S1-37323890003
29*	Clip, Baffle	S1-02131402000	S1-02131402000	S1-02131402000	S1-02131402000
30*	Line, Liquid	S1-02321573000	S1-02321573000	S1-02321573000	S1-02321573000

**NOTE:** \*Not Shown  
 New replacement parts shown in **bold** face type at the first printing of parts list dated 10/09.  
 Major components and suggested stocking items are shown with shaded item number.  
 "←" Across from row indicates a change in that row.  
 --- Not applicable to specified model.  
 1 Coil does not include TXV.

FIGURE 1: SINGLE PIECE ECM AIR HANDLER W/COMMUNICATING CONTROLS -TXV AND FLEX COILS

ITEM	DESCRIPTION	AVC48D3XH21CA	AVC48D4FH21CA	AVC48D4HH21CA	AVC48D4JH21CA	AVC48D4KH21CA	<
1	Motor/Module, ECM Blower (Prog.)	S1-02435830000	S1-02435830000	S1-02435830000	S1-02435830000	S1-02435830000	
1A	Motor, ECM (Less Module)	S1-02431947000	S1-02431947000	S1-02431947000	S1-02431947000	S1-02431947000	
1B	Module, ECM (Programmed)	S1-32432014120	S1-32432014120	S1-32432014120	S1-32432014120	S1-32432014120	
2*	Plug, ID	<b>S1-02543277000</b>	<b>S1-02543277000</b>	<b>S1-02543277000</b>	<b>S1-02543277000</b>	<b>S1-02543277000</b>	
3	Transformer (40VA)	S1-02518452700	S1-02518452700	S1-02518452700	S1-02518452700	S1-02518452700	
4	Control, Fan/Elec Heat	<b>S1-33102968000</b>	<b>S1-33102968000</b>	<b>S1-33102968000</b>	<b>S1-33102968000</b>	<b>S1-33102968000</b>	
5	TXV	---	S1-1TVM4F1	S1-1TVM4H1	S1-1TVM4J1	S1-1TVM4K1	
6	Housing, Blower (w/Wheel)	S1-02642412000	S1-02642412000	S1-02642412000	S1-02642412000	S1-02642412000	
7	Wheel, Blower	S1-02642199000	S1-02642199000	S1-02642199000	S1-02642199000	S1-02642199000	
8							
9	Complete Coil w/Drain Pan (See Note 1)	S1-37323793106	S1-37323793106	S1-37323793106	S1-37323793106	S1-37323793106	
10	Panel, Top Door (Insul)	S1-37323833003	S1-37323833003	S1-37323833003	S1-37323833003	S1-37323833003	
11	Panel, Access Door (Bottom) (Insul)	S1-37323833013	S1-37323833013	S1-37323833013	S1-37323833013	S1-37323833013	
12	Panel, Top (Insul)	S1-37323831003	S1-37323831003	S1-37323831003	S1-37323831003	S1-37323831003	
13	Door, Bottom Door (Filter) (Insul)	S1-37323831002	S1-37323831002	S1-37323831002	S1-37323831002	S1-37323831002	
14	Pan, Drain (Insul)	S1-37323794003	S1-37323794003	S1-37323794003	S1-37323794003	S1-37323794003	
15	Pan, Horizontal Drain	S1-03200217000	S1-03200217000	S1-03200217000	S1-03200217000	S1-03200217000	
16*	Cover, Hairpin	S1-03100212000	S1-03100212000	S1-03100212000	S1-03100212000	S1-03100212000	
17*	Grommet, 3/8"	S1-02813209000	S1-02813209000	S1-02813209000	S1-02813209000	S1-02813209000	
18*	Grommet, 7/8"	S1-02813205000	S1-02813205000	S1-02813205000	S1-02813205000	S1-02813205000	
19	Mount, Motor	S1-37319831002	S1-37319831002	S1-37319831002	S1-37319831002	S1-37319831002	
20*	Grommet, Motor Mount (3 Req'd)	S1-02814740000	S1-02814740000	S1-02814740000	S1-02814740000	S1-02814740000	
21*	Ferrule, Motor Mount (3 Req'd)	S1-02320541000	S1-02320541000	S1-02320541000	S1-02320541000	S1-02320541000	
22	Diagram, Wiring	546537	546537	546537	546537	546537	
23*	Harness, ECM Motor (Comm)	<b>S1-02543283000</b>	<b>S1-02543283000</b>	<b>S1-02543283000</b>	<b>S1-02543283000</b>	<b>S1-02543283000</b>	
24	Grille, Door Blk w/Logo	S1-02642290000	S1-02642290000	S1-02642290000	S1-02642290000	S1-02642290000	
25	Insert, Door Grill Blk	S1-02642292000	S1-02642292000	S1-02642292000	S1-02642292000	S1-02642292000	
26	Grille, Door Gray	S1-02642289000	S1-02642289000	S1-02642289000	S1-02642289000	S1-02642289000	
27	Insert, Door Grill Gray	S1-02642291000	S1-02642291000	S1-02642291000	S1-02642291000	S1-02642291000	
28*	Baffle Kit, Condensate	S1-37323890004	S1-37323890004	S1-37323890004	S1-37323890004	S1-37323890004	
29*	Clip, Baffle	S1-02131402000	S1-02131402000	S1-02131402000	S1-02131402000	S1-02131402000	
30*	Line, Liquid	S1-02322442000	S1-02322442000	S1-02322442000	S1-02322442000	S1-02322442000	

ITEM	DESCRIPTION	AVC60D3XH21CA	AVC60D4HH21CA	AVC60D4JH21CA	AVC60D4KH21CA	<
1	Motor/Module, ECM Blower (Prog.)	S1-02435831000	S1-02435831000	S1-02435831000	S1-02435831000	
1A	Motor, ECM (Less Module)	S1-02431941000	S1-02431941000	S1-02431941000	S1-02431941000	
1B	Module, ECM (Programmed)	S1-32432015121	S1-32432015121	S1-32432015121	S1-32432015121	
2*	Plug, ID	<b>S1-02543278000</b>	<b>S1-02543278000</b>	<b>S1-02543278000</b>	<b>S1-02543278000</b>	
3	Transformer (40VA)	S1-02518452700	S1-02518452700	S1-02518452700	S1-02518452700	
4	Control, Fan/Elec Heat	<b>S1-33102968000</b>	<b>S1-33102968000</b>	<b>S1-33102968000</b>	<b>S1-33102968000</b>	
5	TXV	---	S1-1TVM4H1	S1-1TVM4J1	S1-1TVM4K1	
6	Housing, Blower (w/Wheel)	S1-02642412000	S1-02642412000	S1-02642412000	S1-02642412000	
7	Wheel, Blower	S1-02642196000	S1-02642196000	S1-02642196000	S1-02642196000	
8						
9	Complete Coil w/Drain Pan (See Note 1)	S1-37323793106	S1-37323793106	S1-37323793106	S1-37323793106	
10	Panel, Top Door (Insul)	S1-37323833003	S1-37323833003	S1-37323833003	S1-37323833003	
11	Panel, Access Door (Bottom) (Insul)	S1-37323833013	S1-37323833013	S1-37323833013	S1-37323833013	
12	Panel, Top (Insul)	S1-37323831003	S1-37323831003	S1-37323831003	S1-37323831003	
13	Door, Bottom Door (Filter) (Insul)	S1-37323831002	S1-37323831002	S1-37323831002	S1-37323831002	
14	Pan, Drain (Insul)	S1-37323794003	S1-37323794003	S1-37323794003	S1-37323794003	
15	Pan, Horizontal Drain	S1-03200217000	S1-03200217000	S1-03200217000	S1-03200217000	
16*	Cover, Hairpin	S1-03100212000	S1-03100212000	S1-03100212000	S1-03100212000	
17*	Grommet, 3/8"	S1-02813209000	S1-02813209000	S1-02813209000	S1-02813209000	
18*	Grommet, 7/8"	S1-02813205000	S1-02813205000	S1-02813205000	S1-02813205000	
19	Mount, Motor	S1-37319831002	S1-37319831002	S1-37319831002	S1-37319831002	
20*	Grommet, Motor Mount (3 Req'd)	S1-02814740000	S1-02814740000	S1-02814740000	S1-02814740000	
21*	Ferrule, Motor Mount (3 Req'd)	S1-02320541000	S1-02320541000	S1-02320541000	S1-02320541000	
22	Diagram, Wiring	546537	546537	546537	546537	
23*	Harness, ECM Motor (Comm)	<b>S1-02543283000</b>	<b>S1-02543283000</b>	<b>S1-02543283000</b>	<b>S1-02543283000</b>	
24	Grille, Door Blk w/Logo	S1-02642290000	S1-02642290000	S1-02642290000	S1-02642290000	
25	Insert, Door Grill Blk	S1-02642292000	S1-02642292000	S1-02642292000	S1-02642292000	
26	Grille, Door Gray	S1-02642289000	S1-02642289000	S1-02642289000	S1-02642289000	
27	Insert, Door Grill Gray	S1-02642291000	S1-02642291000	S1-02642291000	S1-02642291000	
28*	Baffle Kit, Condensate	S1-37323890004	S1-37323890004	S1-37323890004	S1-37323890004	
29*	Clip, Baffle	S1-02131402000	S1-02131402000	S1-02131402000	S1-02131402000	
30*	Line, Liquid	S1-02322442000	S1-02322442000	S1-02322442000	S1-02322442000	

**NOTE:** \*Not ShownNew replacement parts shown in **bold** face type at the first printing of parts list dated 10/09.

Major components and suggested stocking items are shown with shaded item number.

"←" Across from row indicates a change in that row.

--- Not applicable to specified model.

1 Coil does not include TXV.

**TO ORDER AUTHORIZED FACTORY REPLACEMENT PARTS** - Contact your Source1 HVAC Parts Distributor or visit our website at **[www.Source1Parts.com](http://www.Source1Parts.com)** for a Distributor and Dealer listing.