

JOB NAME _____ LOCATION _____
 PURCHASER _____ ORDER NO. _____
 ENGINEER _____
 SUBMITTED TO _____ FOR: Reference Approval Construction
 SUBMITTED BY _____ DATE _____

UNIT DESIGNATION: Schedule No. _____ MODEL NO. _____

PRODUCT DATA

COOLING PERFORMANCE

TOTAL CAPACITY MBH
 SENSIBLE CAPACITY MBH
 OUTDOOR DESIGN TEMP. °F

HEATING PERFORMANCE

TOTAL CAPACITY MBH
 OUTDOOR DESIGN TEMP. °F

ELECTRICAL DATA

POWER SUPPLY / /
 TOTAL UNIT AMPACITY AMPS
 POWER INPUT REQ. KW
 MINIMUM WIRE SIZE AWG
 MAXIMUM OVERCURRENT DEVICE
 FUSES CIRCUIT BREAKER ... AMPS

UNIT WEIGHT

TOTAL UNIT WEIGHT LBS.

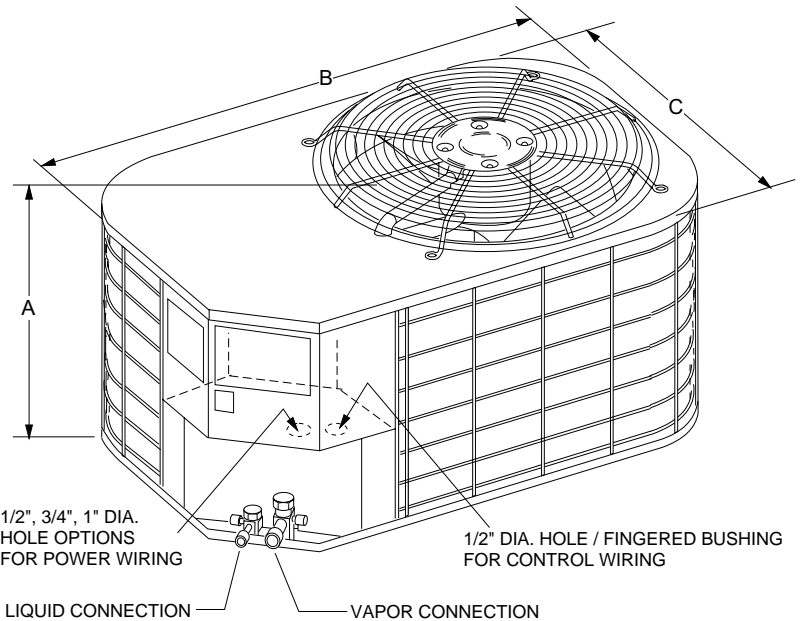
FEATURES:

- UL approval (units & accessories).
- CUL listed.
- Certified in accordance with the Unitary Small Equipment certification program, which is based on ARI Standard 210/240.
- 5-year limited parts warranty on 1Ø models.
- 1-year limited parts warranty on 3 Ø models.
- 5-year limited warranty on the compressor.
- Copper tube / aluminum fins condenser coil..
- Time - temperature defrost control.
- Condenser fan moxex plug.
- Internally protected compressor.
- Suction line accumulator.
- Top discharge propeller type fan.
- PVC wire coated fan guard and 4" x 2" coil guard.
- Pre-painted steel cabinet.
- Standard solid core discharge line filter-drier.
- R-22 total system charge (thru 15 ft. of lines).
- Sweat connections with re-useable service valves.
- 18 guage G90 galvanized formed base pan.
- Easy access to electrical and compressor compartments.

FIELD INSTALLED ACCESSORIES:

Thermostat (#)
 Thermal Expansion Valve Kit (#)
 Outdoor Thermostat (2TD06700124)
 Low Temperature Cutout (2LT06700224)

DIMENSIONS - INCHES



UNIT MODEL	DIMENSIONS			REFRIGERANT CONNECTION LINE SIZE	
	A ¹	B	C	LIQUID	VAPOR
018	19	35	23	3/8"	3/4"
024	25	35	23		
030	25	35	23		
036	25	35	23		
042	27	37	27		
048	33	37	27		
060	26	43	32	7/8"	

¹ Includes fan guard

CLEARANCES

Service Access
 18 inch
 All Other Sides
 10 inch

MATCHING AIR SIDE EQUIPMENT:

Model No. (.....)
 Submittal Form No. (.....)

Refer to 036-21002-001 for detailed specifications on the unit and its accessories. Subject to change without notice. Printed in the U. S. A.

10 SEER SPLIT SYSTEM HEAT PUMP UNITS
BRHS MODELS 1.5 thru 5 Ton Single Phase
EABA MODELS 3, 4 and 5 Ton Three Phase (-T, -W)

036-22470-001-A-0403

Supersedes: 515.16-SD1C (600)

