

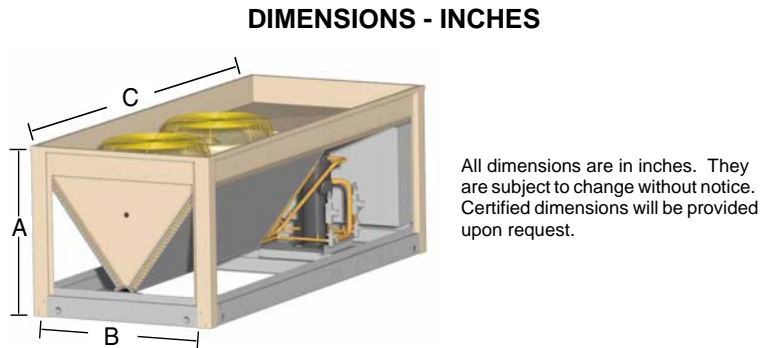
SUBMITTAL DATA SHEET



SPLIT-SYSTEM CONDENSING UNITS 15 & 20 TONS - MODELS: HL-15 & HL-20

JOB NAME:		LOCATION:		
PURCHASER:		ORDER NO:		
ENGINEER:				
SUBMITTED TO:	FOR:	REF:	APPROVAL:	CONSTRUCTION:
SUBMITTED BY:		DATE:		
UNIT DESIGNATION:		SCHEDULE NO.	MODEL NO.	

<u>Cooling Performance</u>	
TOTAL CAPACITY -----	_____ MBH
OUTDOOR DESIGN TEMP. -----	_____ °F
SUCTION PRESSURE AT SATURATION -----	_____ PSIG
SUCTION TEMPERATURE AT SATURATION -----	_____ °F
<u>Electrical Data</u>	
POWER SUPPLY -----	___ / ___ / ___
TOTAL UNIT AMPACITY -----	_____ AMPS
POWER INPUT REQUIREMENT --	_____ KW
MAXIMUM FUSE SIZE	
DUAL ELEMENT -----	_____ AMPS
<u>Unit Weight</u>	
TOTAL OPERATING WEIGHT ---	_____ LBS
(INCLUDING FIELD-INSTALLED ACCESSORIES)	



Unit	Dimensions (In.)		
	A	B	C
15 Ton	37.5	45.75	110.5
20 Ton	37.5	45.75	128.1

HB MINIMUM CLEARANCES	
Location	Dimension (In.)
Overhead (Top)	120"
Front Access Panels	36"
Left Side	30"
Right Side	30"
Rear	24"
Bottom	0"

- Units must be installed outdoors. Overhanging structures or shrubs should not obstruct condenser air discharge.
- Adequate snow clearance must be provided if winter operation is expected.

FEATURES

- ETL Listed to US and Canadian Standards
- Dual Hermetic Scroll Compressors
- Propeller-Type Condenser Fans
- Inherently Protected Fan Motors with Ball Bearing and Low Ambient to 45 °F
- High, Low Pressure Controls and Anti-Cycle Protection
- Refrigerant-22 Holding Charge
- 24 Volt Temperature Control Circuit
- Crankcase Heaters
- Exterior Service Port Connections
- Backseating Suction and Liquid Line Service Valves
- One-Year Limited Parts Warranty with a Five-Year Warranty on the Compressor
- Coil Guard

FIELD-INSTALLED ACCESSORIES

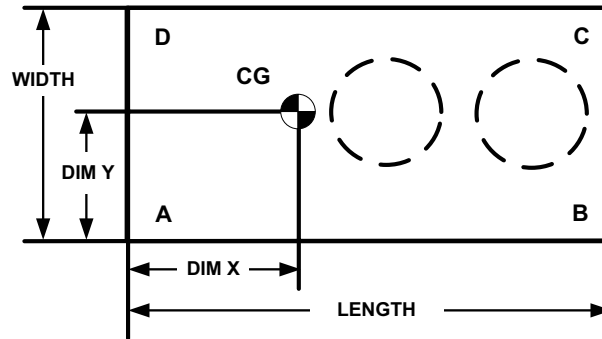
- Hot Gas Bypass -----
- Pump Out Accessory -----
- Phase Monitor Accessory -----
- 0° Low Ambient Control -----
- Phenolic Coating on Condenser Coil -----

MATCHING AIR SIDE EQUIPMENT

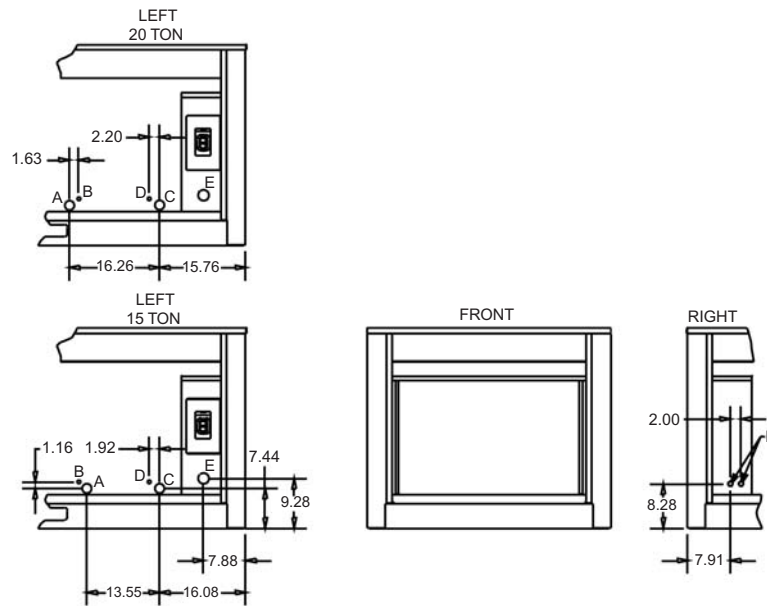
- Model No. ----- (_____)
- Submittal Form ----- (_____)

HL CORNER WEIGHTS AND CENTER OF GRAVITY

UNIT SIZE	SHIPPING WEIGHT	OPERATING WEIGHT	A	B	C	D	UNIT LENGTH	UNIT WIDTH	DIM X	DIM Y
15 Ton Outdoor	944	959	205	275	275	205	110	46	47	23
20 Ton Outdoor	1124	1141	232	339	339	232	128	46	52	23



PIPING AND ELECTRICAL CONNECTION LOCATIONS



CONNECTION ENTRY		SIZE
A	SUCTION LINE SYS. #1	1-1/8 ID (15 Ton) 1-3/8 ID (20 Ton)
B	LIQUID LINE SYS. #1	5/8 ID
C	SUCTION LINE SYS. #2	1-1/8 ID (15 Ton) 1-3/8 ID (20 Ton)
D	LIQUID LINE SYS. #2	5/8 ID
E	POWER WIRING	2" KO
F	CONTROL WIRING	7/8 KO

Subject to change without notice. Printed in U.S.A.
 Copyright © 2004 by Unitary Products Group. All rights reserved.

036-22922-001-A-0804
 Supersedes: Nothing

Unitary
 Products
 Group

5005
 York
 Drive

Norman
 OK
 73069