

# SUBMITTAL DATA SHEET

## R-22 SPLIT SYSTEM CONDENSING UNITS

MODELS: 13 SEER

ERCS018 THRU 060, 1 PHASE - 1.5 THRU 5 TONS

H\*BD030 THRU 060, 3 PHASE - 2.5 THRU 5 TONS

JOB NAME:			LOCATION:		
PURCHASER:			ORDER NO:		
ENGINEER:					
SUBMITTED TO:	FOR:	REF:	APPROVAL:	CONSTRUCTION:	
SUBMITTED BY:			DATE:		
UNIT DESIGNATION:			SCHEDULE NO.	MODEL NO.	

### PRODUCT DATA

#### Cooling Performance

Total Capacity \_\_\_\_\_ MBH

Outdoor Design Temp \_\_\_\_\_ °F

#### Electrical Data

Power Supply \_\_\_\_ / \_\_\_\_ / \_\_\_\_

Total Unit Ampacity \_\_\_\_\_ AMPs

Power Input Req \_\_\_\_\_ KW

Minimum Wire Size \_\_\_\_\_ AWG

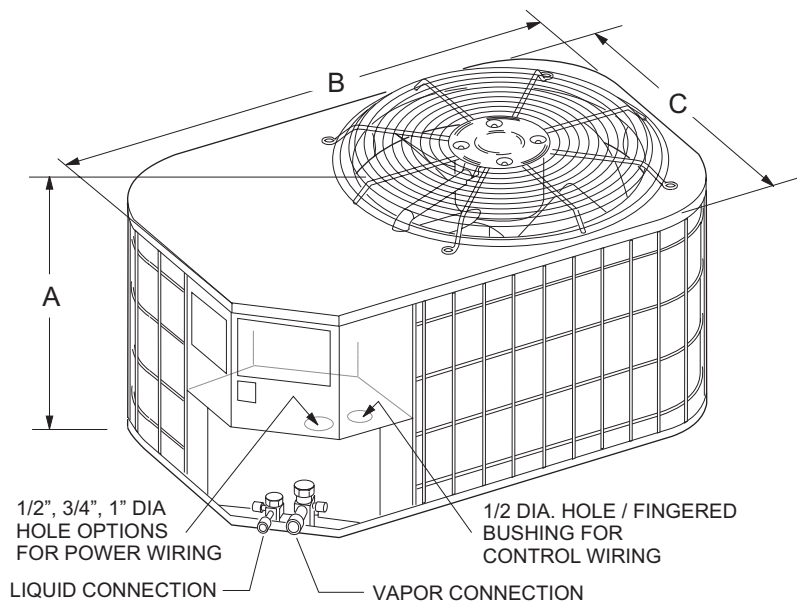
Overcurrent Device

Fuses     Circuit Breaker

#### Unit Weight

Unit Weight \_\_\_\_\_ LBS

### DIMENSIONS - INCHES



All dimensions are in inches. They are subject to change without notice. Certified dimensions will be provided upon request.

### DIMENSIONS

Unit Model	Dimensions (Inches)			Refrigerant Connection Service Valve Size	
	A <sup>1</sup>	B	C	Liquid	Vapor
018	23	35	23	3/8"	3/4"
024	27	37	27		7/8"
030	27	37	27		
036	27	37	27		
042	39	37	27		
048	34	43	32		
060	38	43	32	7/8"*	

1. Including Fan Guard.

\* Adapter fitting required for 1-1/8" line set.



## FEATURES

- UL approval (units & accessories)
- CUL listed.
- Certified in accordance with the Unitary Small Equipment certification program, which the ARI Standard 210/240.
- 5-year limited parts warranty.
- 5-year limited warranty on the compressor.
- Copper tube / aluminum fin coil
- Internally protected compressor.
- Propeller type fan.
- Durable construction.
- Pre-painted steel cabinet.
- Factory wired.
- Sweat refrigerant connections.
- Re-useable brass service valves.
- Easy access to electrical compartment.
- Liquid line filter dryer.
- PVC wire coated fan guard and coil guard.
- 18 gauge G90 galvanized formed base pan.
- Condenser fan molex plug connector.

## CLEARANCES

Service Access	24 Inches
All Other Sides	10 Inches
Above Unit	60 Inches
Below Unit	0 Inches

## MATCHING AIR SIDE EQUIPMENT

Model No.  \_\_\_\_\_  
Submittal Form No.  \_\_\_\_\_

## FIELD INSTALLED ACCESSORIES

Off Cycle Timer (2TD08700124)  \_\_\_\_\_  
Thermostats  \_\_\_\_\_  
Blower Off Delay (2FD06700224)  \_\_\_\_\_

### NOTES:

---

---

---

---