

# SUBMITTAL DATA SHEET



**ECHELON™ SINGLE PACKAGE AIR CONDITIONER  
GAS/ELECTRIC (14 SEER, 12 EER, R-410A) 2 - 5 TON  
MODELS: D\_YQ024 thru 060**

JOB NAME:		LOCATION:		
PURCHASER:		ORDER NO:		
ENGINEER:				
SUBMITTED TO:	FOR:	REF:	APPROVAL:	CONSTRUCTION:
SUBMITTED BY:		DATE:		
UNIT DESIGNATION:		SCHEDULE NO.	MODEL NO.	

### COOLING PERFORMANCE

TOTAL CAPACITY (NET) ----- \_\_\_\_ MBH  
 SENSIBLE CAPACITY (NET) ----- \_\_\_\_ MBH  
 OUTDOOR DESIGN TMP. \_\_\_\_\_ °F DB/WB  
 TOTAL SUPPLY AIR ----- \_\_\_\_ CFM  
 TEMP. OF AIR ENTERING \_\_\_\_\_  
 EVAPORATOR COIL ----- \_\_\_\_ °F DB/WB  
 POWER INPUT REQ. ----- \_\_\_\_ KW  
 (LESS BLOWER MOTOR)

### HEATING PERFORMANCE

GAS FIRED HEAT EXCHANGER  
 INPUT/OUTPUT CAPACITY -- \_\_\_\_ / \_\_\_\_ MBH

### SUPPLY AIR BLOWER PERFORMANCE

TOTAL SUPPLY AIR ----- \_\_\_\_ CFM  
 TOTAL RESISTANCE EXTERNAL  
 TO UNIT ----- \_\_\_\_ IWG  
 BLOWER SPEED (Circle)----- HI MED LOW  
 MOTOR RATING ----- \_\_\_\_ HP  
 POWER INPUT REQ. ----- \_\_\_\_ WATT

### ELECTRICAL DATA

POWER SUPPLY ----- \_\_\_\_ / \_\_\_\_ / \_\_\_\_  
 TOTAL UNIT AMPACITY ----- \_\_\_\_ AMPS  
 MINIMUM WIRE SIZE ----- \_\_\_\_ AWG  
 MAX. OVERCURRENT DEVICE  
 \_\_\_ FUSES \_\_\_ CIRCUIT BREAKER - \_\_\_\_ AMPS

### UNIT WEIGHT

TOTAL UNIT WEIGHT (operational) - \_\_\_\_ LBS

### CLEARANCES

FRONT ----- 36"  
 BACK ----- 0"  
 LEFT SIDE (FILTER ACCESS) ----- 24"  
 RIGHT SIDE ----- 12"  
 BELOW UNIT<sup>1</sup> ----- 0"  
 ABOVE UNIT<sup>2</sup> ----- 36"

- Units may be installed on combustible floors made from wood or Class A, B or C roof covering material.
- Units must be installed outdoors. Overhanging structures or shrubs should not obstruct condenser air discharge outlet

### STANDARD FEATURES

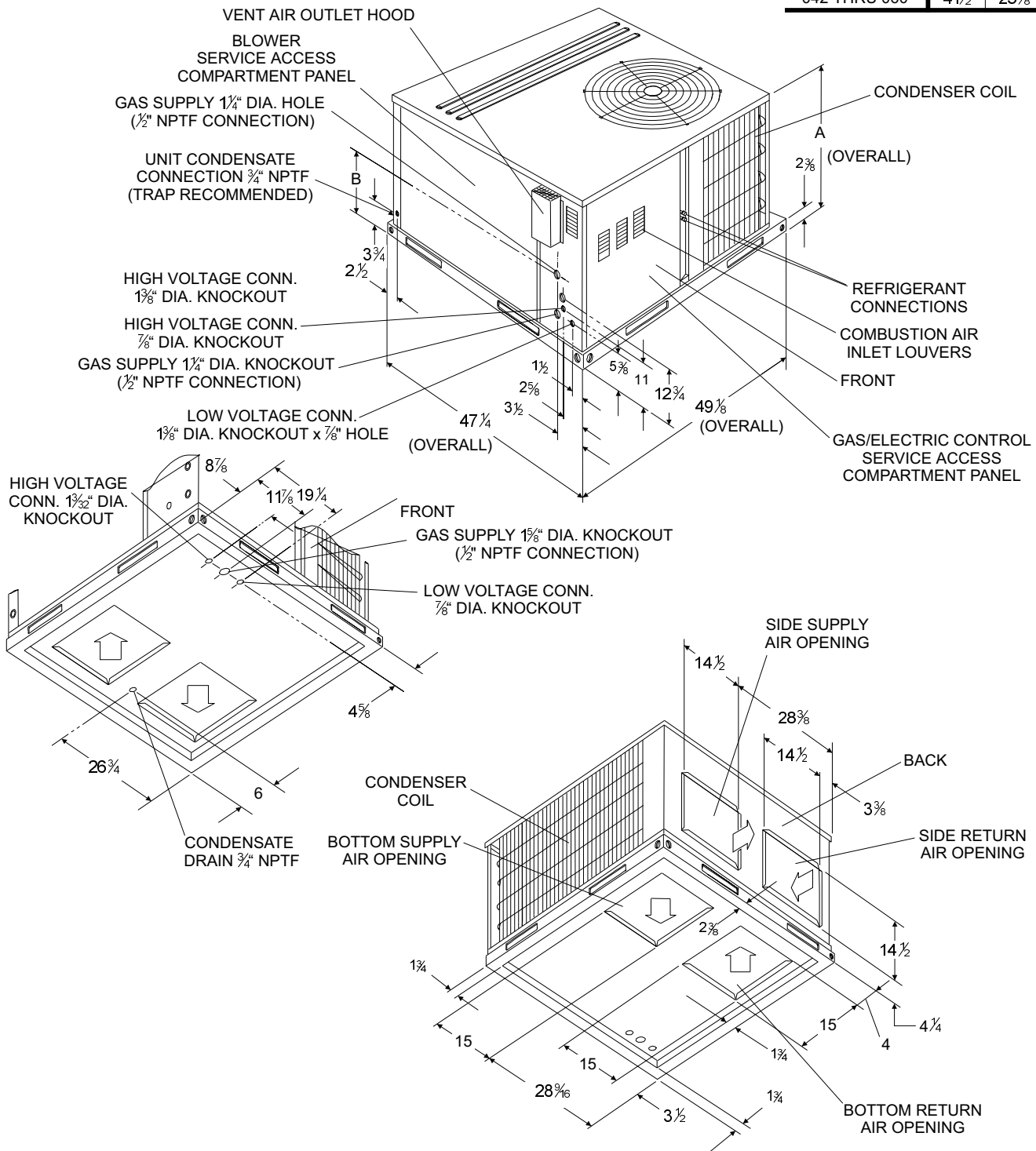
- R-410A Refrigerant.
- Low and high pressure switches on all products.
- Condenser coils are constructed of Micro-Channel aluminum tube, aluminum fins for long lasting durability and efficient operation.
- Evaporator coils are constructed of highly efficient rifled copper tubes with enhanced aluminum fins.
- Internal compressor protection (temperature and pressure).
- Standard cooling operation down to 45° F (Low ambient kit to 0° F available).
- Refrigerant system strainer.
- Single or two stage gas heat.
- Blow thru heat exchanger design with aluminized steel tubes.
- Induced draft "POST-PURGE" gas control logic.
- Reliable spark to pilot ignition.
- Ignition control provides a red LED for diagnostic error codes.
- Compact size cabinet with single footprint.
- Bottom and/or side electrical and gas utility connections.
- Top discharge condenser air design with flush mounted grille guard.
- Full perimeter, removable base rails with built in rigging and shipping provisions.
- Heavy gauge galvanized steel cabinet with a paint finish which has industry leading 1000 hour salt spray rating per ASTM-B117 federal test standards.
- Easily field convertible from side to bottom discharge. No other accessory needed.
- Attractive cabinet design with single piece "watershed" top cover and drip edge to extend cabinet life and deter water collection.
- Factory Installed, attractive protection condenser coil grille.
- Foil face insulation which does not emit fibers into air stream.
- Permanently lubricated condenser and evaporator motors.
- Slide out blower assembly with electronically commutated motors on all models.
- Non corrosive condensate pan internally sloped to meet strict requirements of ASHRAE 62-89 Indoor Air Quality standard.
- Ridged mounted, protected refrigerant access ports externally accessible.
- Both numbered and colored wires.
- All three phase models have built in filter rack with cleanable filters and 75 VA transformer with resettable circuit breaker.
- Warranties on all product applications:
  - 10 year single phase compressor warranty and 5 or 10\* year limited warranty on parts.
  - \* To qualify for the extended 10-year parts warranty, the unit must be registered online at [www.upgproductregistration.com](http://www.upgproductregistration.com) within 90 days of install.
  - 5 year 3 phase compressor warranty and 1 year limited warranty on parts.
  - 20 year gas heat exchanger warranty.

### NOTE:

- A 1" clearance must be provided between any combustible material and the supply air duct work.
- The products of combustion must not be allowed to accumulate within a confined space and recirculate.
- Refer to the Technical Guide for unit specifications.
- Unit may be installed on combustible floors made from wood or class A, B or C roof covering material.
- Units must be installed outdoors. Overhanging structures or shrubs should not obstruct air discharge outlet.

## DIMENSIONS - INCHES

UNIT SIZE	DIMENSION	
	"A"	"B"
024 THRU 036	33½	18¼
042 THRU 060	41½	23¾



Subject to change without notice. Printed in U.S.A.  
 Copyright © 2009 by Johnson Controls, Inc. All rights reserved.

512234-CSD-B-1009  
 Supersedes: 512234-CSD-A-0409

**Johnson Controls Unitary Products**  
 5005 York Drive  
 Norman, OK 73069