

JOB NAME _____ LOCATION _____
 PURCHASER _____ ORDER NO. _____
 ENGINEER _____
 SUBMITTED TO _____ FOR: Reference Approval Construction
 SUBMITTED BY _____ DATE _____

NIT DESIGNATION Schedule No. _____

PRODUCT DATA

COOLING PERFORMANCE

TOTAL CAPACITY	_____ MBH
SENSIBLE CAPACITY	_____ MBH
EVAPORATOR PRESSURE AT SATURATION	_____ PSIG
EVAPORATOR TEMPERATURE AT SATURATION	_____ °F
TOTAL SUPPLY AIR	_____ CFM
TEMP. OF AIR ENTERING EVAPORATOR COIL	____ / ____ °F DB/WB

HEATING PERFORMANCE

Refer to field-installed accessories on reverse side.

SUPPLY AIR BLOWER PERFORMANCE

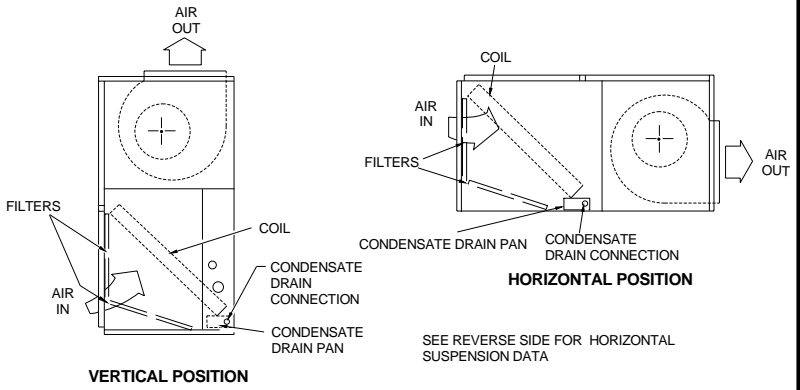
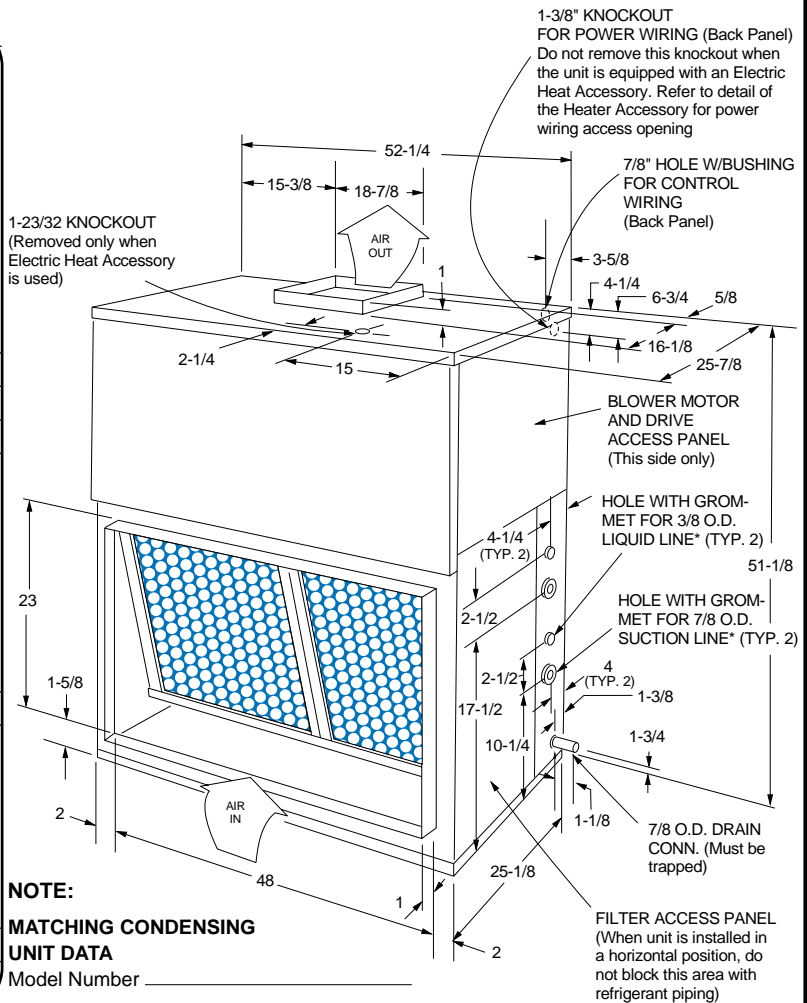
TOTAL SUPPLY AIR	_____ CFM
TOTAL RESISTANCE EXTERNAL TO UNIT	_____ IWG
BLOWER SPEED	_____ RPM
POWER OUTPUT REQUIREMENT	_____ BHP
MOTOR RATING	_____ HP
POWER INPUT REQUIREMENT	_____ KW

ELECTRICAL DATA

MINIMUM CLEARANCES

- Side with RETURN AIR opening 24"
- Side with SUPPLY AIR opening 24" ①
- Side with PIPING CONNECTIONS 52" ②
- Side opposite PIPING CONNECTIONS. 12"
- Side with access for both POWER & CONTROL WIRING ③
- Bottom ④

- ① Overall height of the unit will vary if an electric heater, a supply air plenum or a base is used.
- ② This dimension is required for removal of the coil. Only 26" is required for normal servicing.
- ③ Although no clearance is required for service and operation, some clearance may be required for routing the power and control wiring.
- ④ Allow enough clearance to trap the condensate drain line.

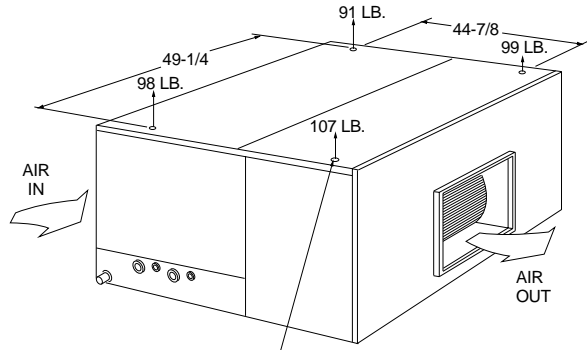


Split System Evaporator Blower
MODEL K_BS120

FORM 550.13-SD11C-0399
 Supersedes: Nothing



SUSPENSION MOUNTING (Horizontal Application)



Four 3/8" - 16 weld nuts are provided in the unit support angles for ceiling suspension. Knockouts are provided in panels for access to these weld nuts. Support rods must be supplied in the field.

ELECTRIC HEATER*

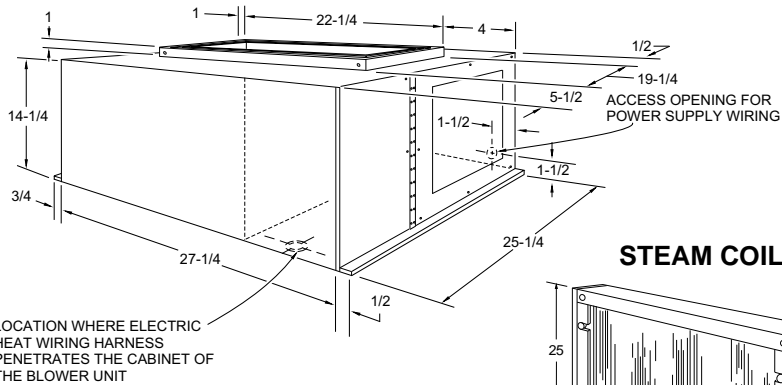
Model Number _____
 Capacity (@ _____ Volts) _____ MBH
 Power Input Requirement _____ KW
 (Less Blower Motor)
 STEAM COIL (1NF0451)
 Steam Pressure _____ PSIG
 Capacity _____ MBH
 Steam Rate _____ LBS/HR
 Entering Air Temperature _____ °F

FIELD-INSTALLED ACCESSORIES

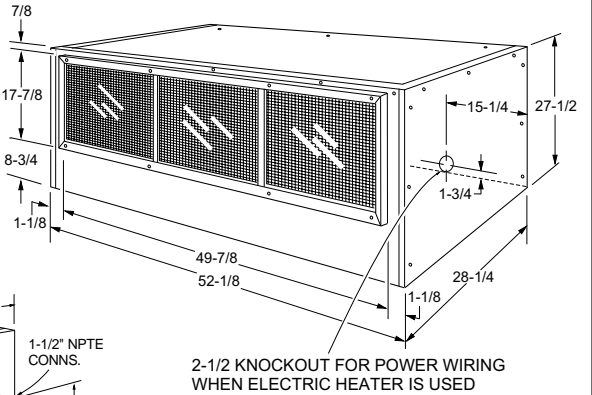
- SUPPLY AIR PLENUM (1SP0451)
 RETURN AIR GRILLE (1RG0451)

ACCESSORY DIMENSIONS - INCHES

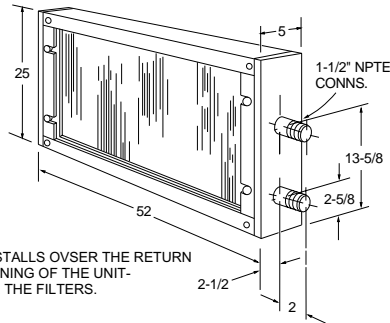
ELECTRIC HEATER



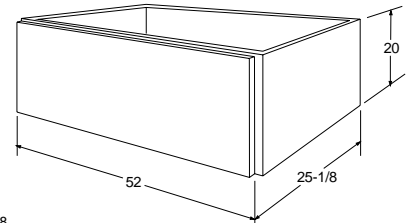
SUPPLY AIR PLENUM



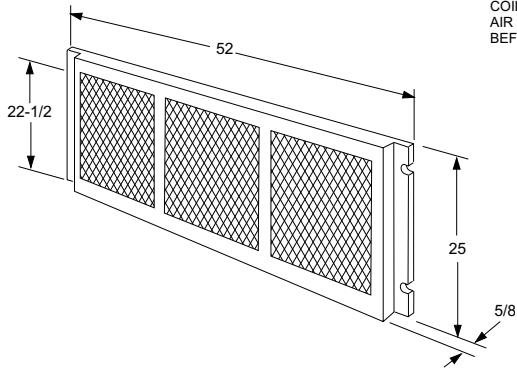
STEAM COIL



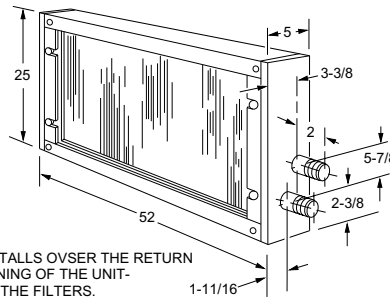
BASE



RETURN AIR GRILLE



HOT WATER COIL



NOTES: _____

