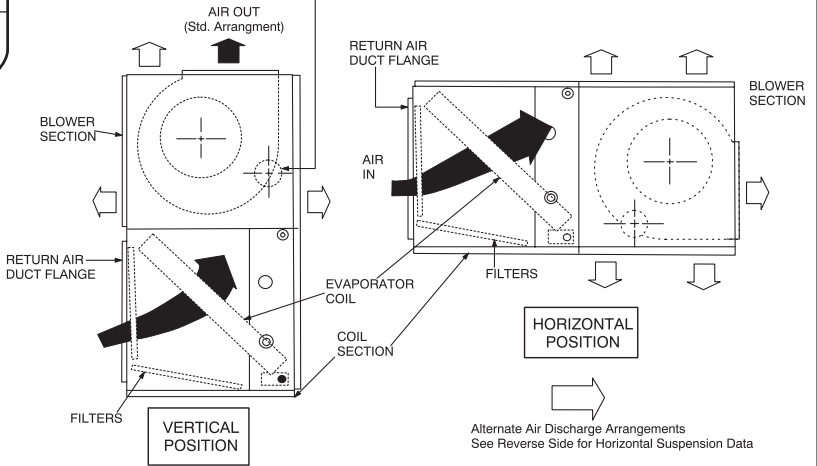
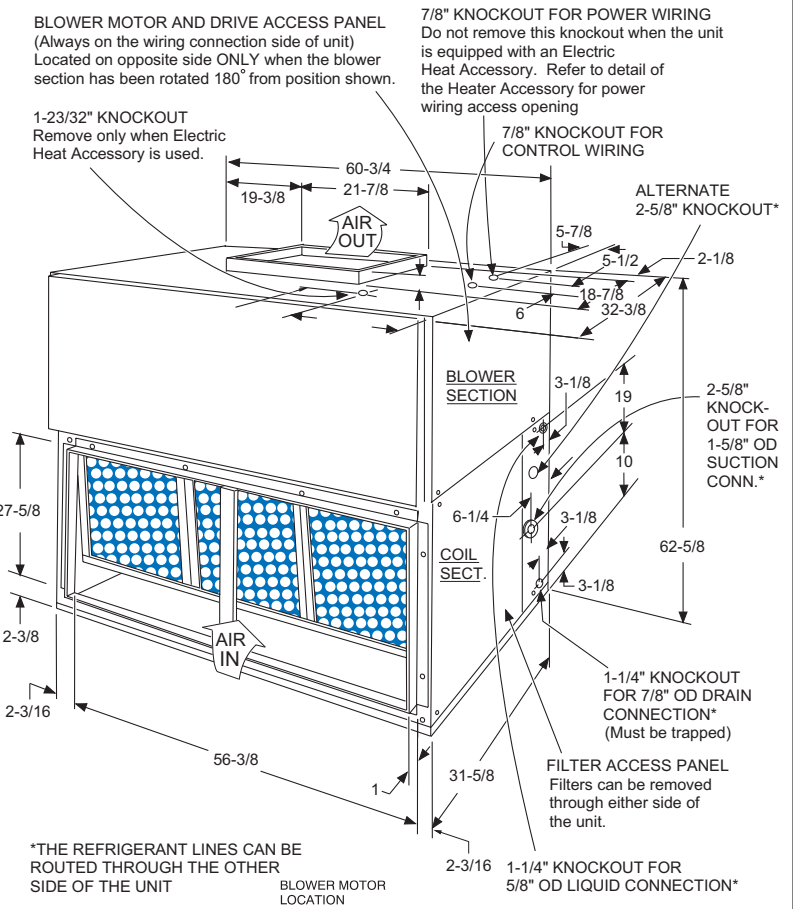


JOB NAME \_\_\_\_\_ LOCATION \_\_\_\_\_  
 PURCHASER \_\_\_\_\_ ORDER NO. \_\_\_\_\_  
 ENGINEER \_\_\_\_\_  
 SUBMITTED TO \_\_\_\_\_ FOR:  Reference  Approval  Construction  
 SUBMITTED BY \_\_\_\_\_ DATE \_\_\_\_\_

NIT DESIGNATION: Schedule No. \_\_\_\_\_

**PRODUCT DATA**

COOLING PERFORMANCE	
TOTAL CAPACITY	_____ MBH
SENSIBLE CAPACITY	_____ MBH
EVAPORATOR PRESSURE AT SATURATION	_____ PSIG
EVAPORATOR TEMPERATURE AT SATURATION	_____ °F
TOTAL SUPPLY AIR	_____ CFM
TEMP. OF AIR ENTERING	_____ °F
EVAPORATOR COIL	_____ / _____ °F DB/WB
HEATING PERFORMANCE	
Refer to field-installed accessories on reverse side.	
SUPPLY AIR BLOWER PERFORMANCE	
TOTAL SUPPLY AIR	_____ CFM
TOTAL RESISTANCE EXTERNAL TO UNIT	_____ IWG
BLOWER SPEED	_____ RPM
POWER OUTPUT REQUIREMENT	_____ BHP
MOTOR RATING	_____ HP
POWER INPUT REQUIREMENT	_____ KW
ELECTRICAL DATA	
MINIMUM CLEARANCES	
Side with RETURN AIR opening	24" ①
Side with SUPPLY AIR opening	24" ①
Side with PIPING CONNECTIONS	61" ②
Side opposite PIPING CONNECTIONS	26" ③
Bottom	4" ④



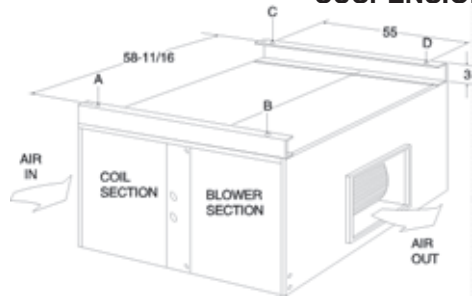
**SPLIT-SYSTEM EVAPORATOR BLOWERS**  
**15 TONS**  
**MODEL K\*BC**

FORM 550.13-SD4C-0402

Supersedes: 550.13-SD4C (0199)



## SUSPENSION PACKAGE (Horizontal Application)



Four 3/8" - 16 weld nuts are provided in the unit support angles for ceiling suspension. Knockouts are provided in panels for access to these weld nuts.

SUSPENSION WEIGHTS, LBS.			
A	B	C	D

### MATCHING CONDENSING UNIT DATA

Model Number \_\_\_\_\_

### FIELD-INSTALLED ACCESSORIES

SUPPLY AIR PLENUM (1SP0452)

RETURN AIR GRILLE (1RG0452)

BASE (1BS0452)

(Vertical Application Only)

SUSPENSION PACKAGE (1HH0451A)

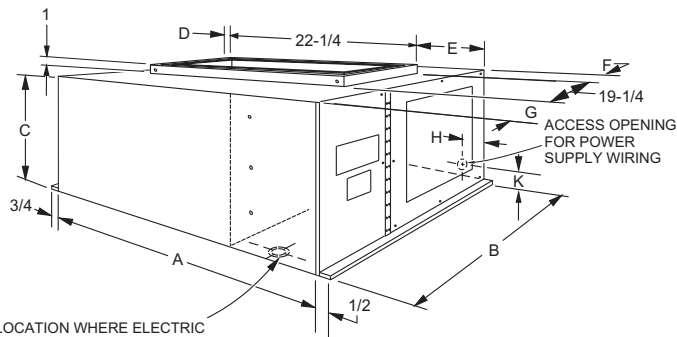
(Horizontal Application Only)

ELECTRIC HEATER\*

Model Number \_\_\_\_\_

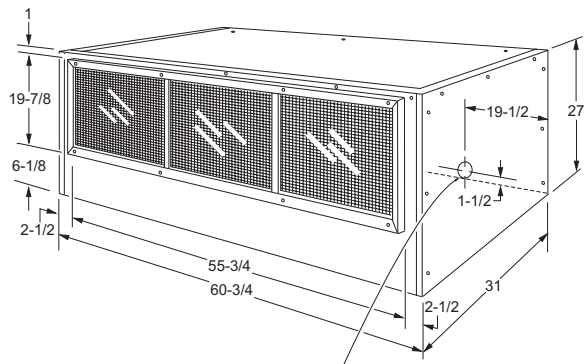
- |   |                          |
|---|--------------------------|
| <input type="checkbox"/> STEAM COIL (1NF0452)     | <input type="checkbox"/> |
| <input type="checkbox"/> Steam Pressure           | _____ PSIG               |
| <input type="checkbox"/> Capacity                 | _____ MBH                |
| <input type="checkbox"/> Steam Rate               | _____ LBS/HR             |
| <input type="checkbox"/> Entering Air Temperature | _____ °F                 |

### ELECTRIC HEATER



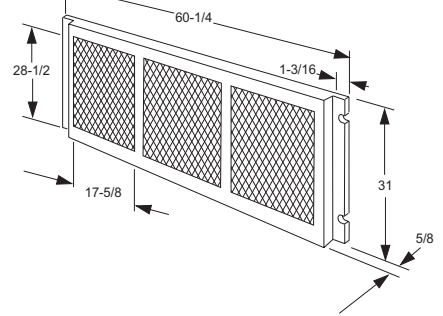
LOCATION WHERE ELECTRIC HEAT WIRING HARNESS PENETRATES THE CABINET BLOWER UNIT

### ACCESSORY DIMENSIONS IN INCHES



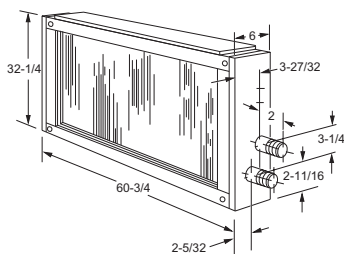
Knockouts for power and control wiring when electric heater is used

### RETURN AIR GRILLE

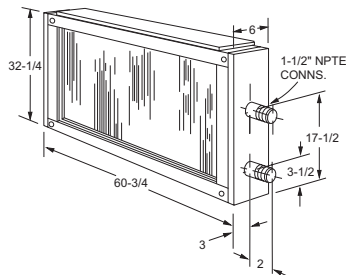


Accessory Model	Nom. KW	Heater Dimensions								
		A	B	C	D	E	F	G	H	K
2HS04501025, 46	10									
2HS04501625, 46	16	27-1/4	25-1/4	14-1/4	1	4	1/2	5-1/2	1-1/2	1-1/2
2HS04502625, 46	26									
2HS04503625, 46	36									
2HS04507225, 46	72	29-7/8	26-3/8	21-3/4	2-3/8	5-1/4	3/4	6-3/8	2-1/4	2-1/2

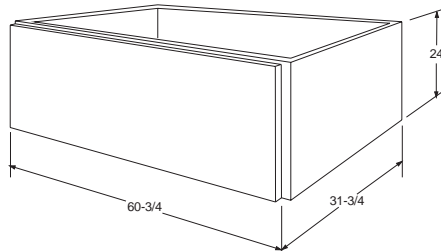
### HOT WATER COIL



### STEAM COIL



### BASE



### NOTES:

---



---



---



---